

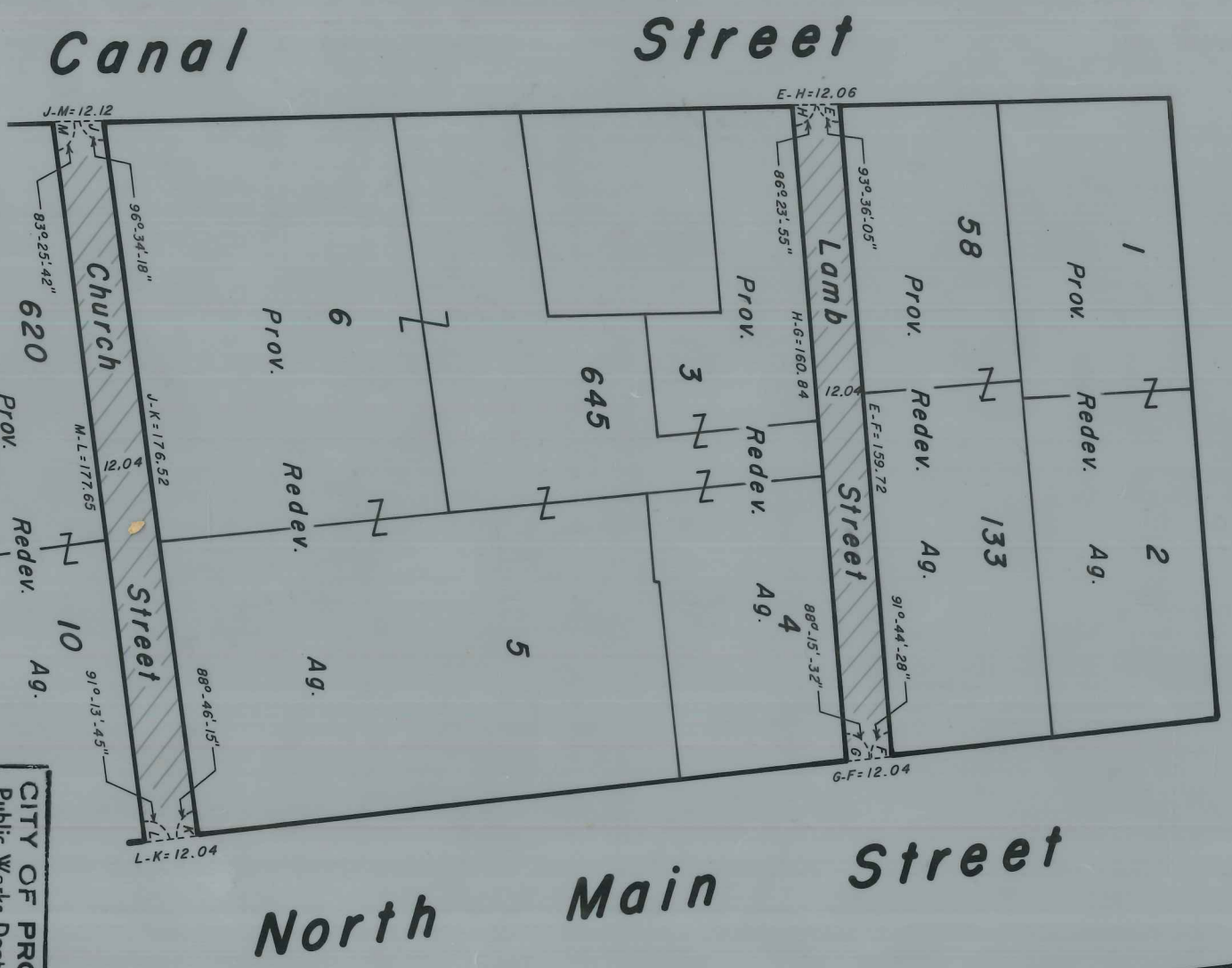
Plan # 268
 App. June 23, 1972

85-50



PROVIDENCE, R. I.
 P. W. DEPT. - ENGINEERING OFFICE
 STREET LINE SECTION
 Plan No. 063524
 Date November 29, 1971

Smith St.



Note:
 Cross-Hatched Areas A-B-C-D-A,
 E-F-G-H-E & J-K-L-M-J
 Indicate Proposed Abandonment.

Lot Numbers From Assessor's Plats 3 & 10

CITY OF PROVIDENCE, R. I.
 Public Works Dept. - Engineering Office
 Showing Proposed Abandonments
 (Gangway, Lamb & Church Sts.)
 Drawn by Proyonsil
 Scale 1"=500
 Corrected by A.J.P.
 Date 11-29-71
 Approved *[Signature]* Chief Engineer